



PROFESSIONAL WORKER'S PACKET

Iowa District East—LCMS

In This Issue

May 2015

- 2 President's Piece for Peace**
 - 3 Calendar of Events
 - 5 Things to Share
 - 6 Vacancy Updates
 - 7 Directory Updates
- 8 From Rev. Dr. Dean Rothchild**
 - 9 Proclaiming Christ Jesus Capital Campaign
- 10 Focus on Education**
- 11 Parish Nurse Page**
- 12 Camp Io-Dis-E-Ca**
- 14 Hospital Chaplaincy**
- 15 LCEF**

THE PROFESSIONAL PACKET
IS IOWA DISTRICT EAST'S
MONTHLY NEWSLETTER SHAR-
ING UPDATES ON VACANCIES,
UPCOMING EVENTS, AND
DISTRICT NEWS.

1100 Blairs Ferry Rd
Marion 52302-3093

Phone: 319-373-2112
Fax: 319-373-9827

lcmside.org

Upcoming Events

- 17 The Gospel in Philippians
CEU Opportunity**
- 19 IDE Golf Outing**
- 20 Isaiah 1-39 - CEU Opportunity**

Iowa District East
is on Facebook!



facebook.com/lcmside

This issue of the Professional Packet is the fourth issue of 2015. The deadline for content that you would like included in the next issue for June is **May 15, 2015**. Content can be submitted anytime before then by emailing it to jon@lcmside.org.

President's Piece for Peace

Rev. Dr. Brian S. Saunders

May 2015

It is becoming increasingly prevalent. We are reading of it in the papers, hearing of it on radio, and seeing it on television. The persecution of Christians is almost becoming an acceptable fad in an ever increasing anti-Christian and pagan world. Just recently a university in Kenya was attacked by militant Muslims and many Christians were killed. That is getting closer to home for me. I have been to Kenya and worked very closely with the Evangelical Lutheran Church of Kenya as well as taught at the seminary in Motonga. While there I never encountered any kind of threats but we see that is not necessarily the case today. Can this happen on our shores? Is persecution already among us on a different level or from a different foe? We may soon find out.

In California one of our LCMS pre-schools has a law suit against it because one of its lessons taught that marriage is between one man and one woman. The homosexual issue is becoming more and more aggressive. Progressive movements always begin with a desire to at least have a voice in the discussion. Then they want acceptance. After that they want punishment for anyone who does not accept their position. We have reached stage three in this country. We may and can expect retribution of some sort and persecution from legal authorities in the near future.

So what do we do? How do we contend with the new foe, a progressive culture that demands we go against our confession and ignore God's Holy Word? What we do and where do we go is an easy question to answer. We go to the Word, we let God speak to us for our sake. When Jesus preached on the mount he said "Blessed are those who are persecuted because of righteousness...Blessed are you when people insult you, persecute you and falsely say all kinds of evil against you because of Me" (Matt. 5:10-12). When this happens we may know we are in good company. The enemies of God's Kingdom persecuted the prophets, they persecuted Jesus, Peter and Paul found themselves in prison for standing true to the Word of God.

Being in good company doesn't make it any easier or enjoyable yet Jesus says "rejoice" for in and through it all He shall shower His blessings upon us. He will never take His saving Word away. He will always honor His promise to you in baptism and no one can take away the forgiveness of sins He bestows in Holy Absolution. He will never leave us nor abandon us; and He knows what it is like to be "forsaken."

For the sake of Truth we cannot buckle under to the pressures of a pagan society. For the sake of the Holy Spirit's power converting empty and hate filled hearts we must stand firm and speak forth the Gospel in all its truth and purity. Will we be insulted for it? May we be persecuted by laws that have overstepped their bounds and demand from us obedience to which we cannot obey? May court cases against us include false testimony? Yes. Jesus already said they would. Paul experienced it almost every place he traveled in the first century. It is the natural consequence of a fallen world that hates Christ and uses its resources attempting to eventually bring an end to Christianity.

Fear not my friends. Jesus said that the gates of hell will never prevail against the gates of heaven. From time to time it might appear as they are but in reality nothing is taking place of which Jesus is unaware. He is among us with His powerful Word and blessed Sacraments which bring His victory over sin, death and the devil to each of us. We are made partakers of His life, death and resurrection. We have nothing to fear. We have His Word to be faithful to. It is our honor to stand for it, with it, proclaim it and carry on the ministry guided and directed by every Word that comes from Scripture. To compromise any of it is to open the door for Satan's fangs to bite deep into a place he has no right to be. "This world's prince may still scowl fierce as he will, he can harm us none. He's judged; the deed is done; One little word can fell him" says Luther in his great hymn. Luther stood firm on the Word and could do no other. Neither can we my faithful brothers and sisters. We stand firm on the Word as the Lutheran Confessions exhibit it to us. God bless you and keep you in His mighty protecting arms.

President Saunders.

Calendar of Events

May

| | | |
|-----------|------------------|--|
| 7 | MARION | Youth Committee Meeting 7:00 pm District Office |
| 9 | MARION | Convention Floor Committee Meetings 9:00 am District Office |
| 9 | HIAWATHA | LWML Board Meeting 9:00am Zion—Hiawatha |
| 21 | MARION | Worship Committee 9:00am District Office |
| 21 | MARION | Missions Committee 9:00am District Office |
| 21 | IOWA CITY | Retired Pastors' Luncheon 12:00pm Our Redeemer |
| 25 | | Memorial Day District Office Closed |

June

| | | |
|--------------|---------------------|---|
| 24 | ALTOONA | Lutheran Day At Adventureland |
| 26-27 | CEDAR RAPIDS | District Convention 8:00am Marriott |
| 29 | ANAMOSA | IDE Golf Outing 8:30am Fawn Creek Country Club |

Save the Dates

May 2015

Lutheran Day at Adventureland June 24, 2015

Adventureland
305 34th Ave NW,
Altoona, IA 50009

2015 District Convention June 26-27, 2015

Marriott Hotel and Convention Center

1200 Collins Rd NE
Cedar Rapids, IA 52402

Worship Workshop August 29, 2015

Fall Pastors' Conference October 5-6, 2015

Camp Io-Dis-E-Ca

3271 Sandy Beach Rd NE,
Solon, IA 52333

Things to Share

May 2015

Church & Sanctuary Photos

IDE Archives is planning to put on a continuous slide presentation at the display table at the next IDE Convention. A few church exterior (E) and sanctuary (S) pictures are still needed. Check the list and send your photo(s) to the IDE Archivist at onaission@lbt.org

- Christ-Waterloo (E & S)
- Good Shepherd-West Union (S)
- Our Savior-Ft. Madison (E & S)
- Our Savior-Manchester (E & S)
- Redeemer-Ventura (E & S)
- St John-Sumner (E & S)
- St Paul-Alden/Buckeye (S)
- St Paul-Waverly/Artesian (S)
- St Paul-Evansdale (S)
- St Paul-Sumner (S)
- Trinity-State Center (S)

Allen Konrad.....><>
IDE Archivist

2015 Convention

Registration is open for the 2015 District Convention. You can find out more and register at <http://lcmside.org/2015-district-convention/>.

Hotel Reservations:

Hotel Reservations must be made by June 5, 2015.

You can register for the Iowa District East block of rooms at <https://resweb.passkey.com/go/IADistrictEastLCMS> . or call the reservation hotline at 1-800-396-2153. When making the reservation by phone be sure to reference the Iowa District East LCMS convention. This will insure you're given the correct group rate.

1 King or 2 Double guestrooms are \$98.00 per night

1 Bedroom King Suites are \$108 per night.

Congregational Statistics

Please submit your congregational statistics by April 15, 2015. Our goal is to achieve 100% participation from all Iowa District East congregations! If you have questions please contact the district office at 319-373-2112.

Vacancy Updates

May 2015

Calling Congregations:

Messiah, Mason City—Clarke Frederick (vacancy pastor)
Trinity, Ottumwa—Calling Graduate—Kevin Saylor (vacancy pastor)
Redeemer, Ventura—Scott Kozisek (vacancy pastor)
Grace, Waterloo—pastoral transition

Pastors Call Update:

Accepted:

Pending: Grant Bode, New Ulm MN to Redeemer, Ventura

Declined:

DCE / School / Teacher Calls:

Vacancies: Trinity, Davenport—Preschool Teacher
Trinity, Davenport—6th Grade Teacher
Community, Readlyn—Principal

Accepted: Margaret Weber, Seward Grad to Trinity, Cedar Rapids
Rebecca Snow, Trinity, Davenport to Lamb of God, Las Vegas, NV
Josh Menke, Trinity, Davenport to Immanuel, Giddings, TX
Hannah Keuning, Seward Grad to Central, Newhall

Pending: Nicholas Muench, Matteson, IL to Community Lutheran, Readlyn
Joni Rebarck, Concordia River Forest to Trinity, Davenport

Declined:

Directory Updates

May 2015

Please take a moment to add these changes and corrections to your Fall 2014 directory.

| Page | Name | Change |
|-------------|-----------------------------|---|
| 40 | Muscatine—Our Savior | Remove Administrative Assistant info and oslcs@machlink.com |
| 45 | Waverly— St. John | Website: www.stjohnlutheranwaverly.org |
| 54 | School Secretary | Lisa Galvin |

Please notify the District Office of any changes in email address, home address or staff changes. Include all professional worker changes within your congregation, school or preschool.

Anchored in Christ Jesus

May 2015

Rev. Dr. Dean F. Rothchild
Assistant to the President

St. Paul wrote: “As a result, we are no longer to be children, tossed here and there by waves, and carried about by every wind of doctrine, by the trickery of men, by craftiness in deceitful scheming; but speaking the truth in love, we are to grow up in all aspects into Him, who is the head, even Christ, from whom the whole body being fitted and held together by that which every joint supplies, according to the proper working of each individual part, causes the growth of the body for the building up of itself in love.” Ephesians 4:14-16. This is one of the many tricks which the devil uses is to get people to thinking that their lives are anchored in their works instead of Christ Jesus.

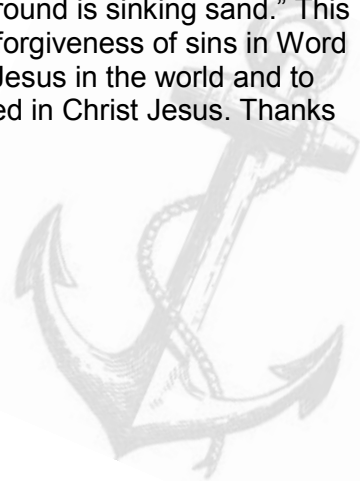
The prophet Isaiah states: “For all of us have become like one who is unclean, And all our righteous deeds are like a filthy garment; And all of us wither like a leaf, And our iniquities like the wind take us away.” Isaiah 64:6. Our sins literally blow us away, have us tumbling and slipping and sliding and falling. Such is also the case for one who tries to build their life upon their filthy works.

So it can be for the church who jumps upon every fad which comes down the road that is promoted and sold as the next best thing. If it was so good, why do you need to try something “new” next year? Was this because the previous fad or program didn’t deliver? Could it be that it has lost her moorings and is no longer anchored in Christ Jesus?

Life does toss and turn us in the waves of doubt, unbelief, sin, unrest, and a whole host of other temptations and distractions. As to speaking the truth as Paul says, the truth of the matter is simple, we are sinners. We have not and cannot keep the Law of God on our own. We deserve to die and suffer eternal damnation in hell.

The truth is that Jesus came to redeem the world from sin, death, and the power of the devil. Jesus kept the Law perfectly. Jesus paid the price for our sins. Jesus suffered and died and rose again on the third day. Jesus declared on the cross that “It is finished.” He has done it all. In our baptism we were given all that Christ Jesus accomplished and we were clothed in Him. As Isaiah pictures it: “I will rejoice greatly in the LORD, My soul will exult in my God; For He has clothed me with garments of salvation, He has wrapped me with a robe of righteousness, As a bridegroom decks himself with a garland, And as a bride adorns herself with her jewels.” Isaiah 61:10.

The Church of Christ Jesus is anchored in Jesus and His Word. As Edward Mote wrote in the hymn, My Hope Is Built on Nothing Less, “When darkness veils His lovely face, I rest on His unchanging grace; In ev’ry high and stormy gale My anchor holds within the veil. On Christ, the solid rock, I stand; All other ground is sinking sand.” This church gathers weekly to receive in the Divine Service the forgiveness of sins in Word and Sacrament. The church is then sent to confess Christ Jesus in the world and to one’s neighbor. Such is the life of the baptized and anchored in Christ Jesus. Thanks be to God for faithful pastors and faithful congregations.



Capital Campaign Update



Proclaiming Christ Jesus! Luke 24:46-47

Capital Campaign (Update: 04-09-15)

approved on 6/29/12 by Iowa District East in Convention.

- Pastors are being contacted by phone for potential names of those saints in Christ Jesus who may wish to make an individual gift.
- Dr. Rothchild will send a letter of introduction to potential donors and will follow-up with a phone call to schedule a personal visit.
- Dr. Rothchild will show the DVD and share other information at the time of his visit and the saints will be given a donor form to complete as they deem appropriate.
- Dr. Rothchild wishes to thank all our faithful donors, both individuals and congregations

Update:

Gifts received to date: \$ 485,248
Gifts promised in next 1-10 years: \$ 46,008

Total to Date: \$ 531,256

For further information, please contact Rev. Dr. Dean F. Rothchild at 319-373-2112 (office), 319-350-9564 (cell) or deanrothchild@lcmiside.org.

Thanks to Pam Krog, Sherry Brendes and Jon Kohlmeier as we celebrate Administrative Assistant Day and appreciate their skills and efforts on our behalf. God bless!

The March 3 celebration in the State Capitol drew significant attention to school choice in Iowa and the drive to fund educational choice for all Iowa parents for their child's education. You will have more opportunities in the days ahead to show your support. Assist your school's parents to purchase this year's ILSTO credits, where your dollars are matched by the state legislature funding so your child's education can receive a significant subsidy. Talk to Dewey Torkelson who heads up this effort for our Lutheran schools.

NLSA deadline is May 15 for sending your yearly report to Mark Grewe in Williamsburg. He does a fine job coordinating school accreditation for us, and he meets with Synodical officials in August to certify all new accredited schools and all renewals.

Thank you for your school's contributions to **Hearts for Jesus**. We received \$ 785.66 for Kristin Matasovsky and Africa Missions and \$ 785.66 for Owen's Mission and Lutherans for Life. God bless the efforts you have supported.

Any schools planning to yet call teachers should get your requests to the District Office and to the Synodical placement officers in the Concordia University System immediately. Check with Pam Krog in the District Office for forms and information. If you have Lutheran Portal access, you may request access to candidate search there. Please keep us informed on all openings.

Coming Events:

August 3 (Monday) - Iowa Districts East and West Administrators will meet from 9am to 3pm at Valley Lutheran High School in Cedar Falls. Join as Dr. Terry Schmidt from the LCMS International Center tells us about the future of LCMS schools and changes in NLSA procedures for 2016 school year. Watch for registration information in June.

October 15-16 - Fall Iowa Teachers Conference at Gloria Dei in Urbandale. Housing and banquet at Stoney Creek Lodge. Keynoter will be Dr. Brian Friedrich of Concordia Nebraska with many fine sectionals by top name speakers. Watch for registration information.

President Saunders and I would like to host a "Wrap-up Day celebration" for the current school year at the District Office on **June 16**, with an evening at the Cedar Rapids Kernels baseball game. We would begin at 10am to 3pm with the celebration led by our President and conclude after the ballgame in the evening. It's Thrivent Night, so watch for special events and promotions. More information and registration information in May. Register early and enjoy a great day.

God bless you for your fine year of Christian Education through Lutheran Schools. May the 2016 year and upcoming celebration of the Reformation continue to provide you with joy in ministry!

Taken from the Kansas Parish Nurse Ministry Newsletter, May 2015.

Submitted by Ronda Anderson RN,
IDE Parish Nurse District Representative.
nurse.bethanycr@gmail.com

A Mother's Day after Your Mother's Death

Mother's Day can be a pretty painful day for those grieving the death or absence of their mother. Mother's Day grief can bring up feelings of longing, yearning, sadness, loneliness, depression, anger, bitterness, alienation and despair. For many the day becomes about *just getting through*. Obviously there is no replacement for your mother this Mother's Day, but there are constructive ways to deal with the day that might make you feel closer to your mother's memory and the people in your life. Here are a few suggestions:

If you decide to lay low:

- ◆ Turn off the TV: Mother's Day themed advertising and programming ranges from slightly agitating to rage inducing for those grieving the loss of their mother.
- ◆ Skip the Mother's Day brunch: If you're prone to bitterness on Mother's Day it might be best to avoid places like brunch or the mall, where Mother's Day activities traditionally take place.
- ◆ Plan a constructive and time consuming activity: Mother's Day avoidance is the perfect excuse to get your spring gardening done, cook meals for the upcoming week, or clean out your closet.

If you want to focus on your loved ones:

- ◆ Spend time with the other fabulous women in your life. Many of the things we celebrate on Mother's Day are in praise of traits, qualities, roles and responsibilities that many of the women in your life likely possess.
- ◆ Teach your children something your mother taught you: This Mother's Day activity reaches across three generations and provides you with the perfect opportunity to bring your mother into your relationship with your kids. It provides natural opportunities to talk about your mother with your kids and helps you to feel close to her memory.
- ◆ Focus on your wife (for the motherless guys): Make this the best Mother's Day she will ever have.
- ◆ Send a card to another mother: Are there other mothers who you admire? A friend, aunt, in-law, or neighbor? Send them a Mother's Day card and let them know you think they're doing a great job.

If you want to spend time with your mother's memory:

- ◆ Spend time in a place where you feel close to your mother's memory: This could be at church, her grave, the lake.
- ◆ Spend time looking at photos or items from your mother: Most of us have a 'mom box' of sorts where we keep old cards, letters, photos, and other items. Spend a little time reminiscing and going through these things.
- ◆ Write a letter to your mother and update her on all that's happened since her death: Obviously you won't be able to send this letter, but sometimes writing to deceased loved ones can be therapeutic and help to continue your bond with them.

Camp Io-Dis-E-Ca



May 2015



Mother/Child Retreat - May 8-9

Camp Io-Dis-E-Ca will be hosting its annual Mother/Child Retreat on May 8-9. Deaconess graduate Renae Richard of North Liberty will be leading a study for the mothers/grandmothers attending the retreat. The retreat begins at 7PM on Friday the 8th, and ends at 4PM on Saturday the 9th. Don't miss your chance to have a fun weekend with the kids, and even grandma can come! Children of all ages are welcome and we'll have several family friendly activities to do throughout the weekend. Contact the camp office for more information by emailing office@iodiseca.org.

Spring Workdays Approaching

The front of the Omega Lodge is in dire need of some landscaping work. We've got the supplies on hand but we need your help to lay brick edging and neatly organize the area. Additionally, the Alpha Lodge needs about half of its exterior painted.

Going out from our main site, all of our trails need mulch. One of the camp activities, Gaga Ball, needs to have some work done as one side of the pit is lower than the other and needs to be raised back up. Over in the campground, some of the RV pads need to have gravel spread on them and some of the trees need mulch around them.



Camp Scholarship Funds Needed

Camp Io-Dis-E-Ca has several camp scholarship requests, but needs more funds to be able to cover each of them. You can make a Christ-centered camping experience for a child possible by making a donation to the Camp Scholarship fund. This fund goes to support both Family's First Camper scholarships, as well as camp scholarships for children who need financial assistance to make their week of camp a reality.

We anticipate needing up to \$2,500 more that we currently have available to be able to fund every camper who qualifies or requests assistance. To donate, write "scholarship" in the memo line of your check or online contribution. Your donation directly supports our primary mission of providing young people with outdoor recreation and Lutheran outdoor education!



3271 Sandy Beach Road NE, Solon, IA 52333

phone 319.848.4187

web www.campiodiseca.org

email office@iodiseca.org

Camp Presentations

Would you like to know more about Camp Io-Dis-E-Ca? Camp Director Daniel Sanchez is available to speak to congregations and groups about Camp Io-Dis-E-Ca's mission, facilities, and programs. Call 319-848-4187 to schedule a speaker!



THRIVENT CHOICE

Our total Thrivent Choice for 2014 contributions was \$17,199! Thank you, donors, for making this program a success for Camp Io-Dis-E-Ca. Will you help make 2015 another excellent year in Thrivent Choice giving?

Go to <https://www.thrivent.com/thriventchoice/> or call 800-THRIVENT (800-847-4836) and state "Thrivent Choice" to designate your choice dollars for Camp Io-Dis-E-Ca today.

Thank you for making Thrivent Choice a valuable stream of revenue for Camp Io-Dis-E-Ca!



THRIVENT
FINANCIAL®

Needs List

Convection Oven; Ping Pong Paddles; First Class Postage Stamps; Toilet Paper; Trash Bags (18 and 33 Gallon); Smoke Detectors; Carbon Monoxide Detectors; Clorox Bleach; Disinfectant Spray; Popsicle Sticks. **Please see our web site for a complete list: www.campiodiseca.org.**

IMPORTANT DATES

April 25 & May 2
Spring Workdays

May 2
*Early Bird Registration
Discount Deadline #2*

May 8-9
Mother/Child Retreat

June 10
First Day of Summer Camp

August 1
Summerfest Auction Fundraiser

August 28-29
Father/Child Retreat

Nurse-of-the-Week

Camp Io-Dis-E-Ca needs a registered R.N each week of summer camp to address health related needs such as ill-nesses, injuries, and medication management. We'll provide your room and board for the week, so there is no expense! If you or someone you know is interested in spending the week at camp in this fun and important role, please contact Daniel at 319-848-4187 or email director@iodiseca.org

SUMMER FEST QUILTS & CRAFTS NEEDED

Our annual Summerfest auction fundraiser is happening on August 1st this year. That means we're only about 3 months out! We're looking for quilts and other fine craft items to be donated and then auctioned off for the benefit of the camp. Send yours in today! We need your donations and attendance to help make our annual auction a success. See you on August 1!



Become a fan of Camp Io-Dis-E-Ca by clicking the 'Like' button on our Facebook page.

3271 Sandy Beach Road NE, Solon, IA 52333

phone 319.848.4187

web www.campiodiseca.org

email office@iodiseca.org

U of I Hospital Chaplaincy

May 2015

As some of you may have read this past Monday (April 13, 2015), the University of Iowa Hospitals and Clinics celebrated its 5,000th successful organ transplant. It is nothing short of amazing to consider God's gift of medicine to us.

The University of Iowa Hospitals and Clinics is Iowa's first and only multi-organ transplant hospital serving both adult and pediatric patients. However in addition to providing transplants for Iowans, the hospital has done transplants for people from 46 states and 12 countries. It is not uncommon for the families of members who received the organs to become close to the families of the members who donated the organs.



While we rejoice with those who rejoice we are ever mindful of mourning those who mourn the loss of loved ones who donated their organs to save others. If you are not already an organ donor, I encourage you to spend some time in prayer, thinking of the good you may have the opportunity to do for someone else and their family.

We also celebrated another milestone lately as a new procedure has been perfected that allows Doctors to replace heart valves by going in through the leg as opposed to having to open the chest as happened to me when I had my doubles bypass.

This procedure is now spreading rapidly around the world. Here at the University of Iowa Hospital we have had two LCMS people, one person who was 93 and another person that was 99 years receive new heart valves. Prior to this procedure they would have never survived the operation to replace their heart valves. Once again we humbly thank God for His gifts of medicine and the miracles He performs in our present time, the here and now.

In closing for this month, as always, please remind your members to tell the registrar or the nurse attending to them that their religious preference is LCMS. That way, they will be certain to show up on the LCMS list and I can make a visit in the stead of their home Pastor.

Until next month: God's blessings to all of you and your families both at home and at church.

Rev. Michael Musick
Pastor—St. Paul's Lutheran Church
Luzerne, Iowa
Chaplain—University of Iowa Hospitals and Clinics
Iowa City, Iowa

IOWA EAST & WEST LCEF



For more information on LCEF loans, investments, and services, please contact:

Carole L. White LCEF
V.P. Iowa East & West
1150 Home Park Blvd #7
Waterloo, IA 50702

Toll Free Phone:
1-877-439-5233
carole.white@lcef.org



Rev. Bob Riggert
Director of Customer
Services
bob.riggert@ialcef.org



Ruth Gerken
Promotions Director
Iowa East & West
ruth.gerken@ialcef.org

For current rates visit
lcef.org



Lutheran Church Extension Fund
> where investments build ministry

Keep Offerings Consistent Even During Vacation

Joyful Response® makes
it easy—and it's free!



Lutheran Church Extension Fund (LCEF) offers e-tithing and e-tuition payments through the *Joyful Response* program. *Joyful Response* is a free stewardship service for Lutheran Church—Missouri Synod congregations, education programs and ministries.

Use *Joyful Response* to:

- > Give consistently.
- > Help you prepare and fulfill your stewardship plans.
- > Share your generosity efficiently and predictably.
- > Make tuition payments reliably and conveniently.
- > Save the time and cost of writing checks.

Call LCEF at 800-843-5233 or visit lcef.org to learn more.

Young Investor Challenge winner announced

This year's participants in the 2015 Young Investor Challenge were extremely competitive.

Iowa's winner, Central Lutheran School in Newhall, was less than six percent ahead of second place Hope Lutheran Church in Des Moines. Trinity Lutheran School in Boone came in at a very close third place while Shepherd of the Valley in West Des Moines was right on their heels placing fourth. It was great participation by all.



The Y.I. Challenge was a ten-question quiz offered online from Jan. 26 - Feb. 14, 2015 in celebration of National Lutheran Schools Week. For more information on LCEF's Young Investors (Y.I.) Club, visit lcef.org.

LCEF is a nonprofit religious organization; therefore, LCEF investments are not FDIC-insured bank deposit accounts. This is not an offer to sell investments, nor a solicitation to buy. LCEF will offer and sell its securities only in states where authorized. The offer is made solely by LCEF's Offering Circular. Investors should carefully read the Offering Circular, which more fully describes associated risks.



Small Stewards - Big Blessing

Biblical Stewardship Lessons for and with Children

(You are invited to share this lesson with children in Sunday school openings, classroom devotions, children's worship messages, or other congregational settings. The lesson can also be used by the family. "Notes to Family" provides home applications and explorations. May the "small" Biblical stewardship mentors provide "big blessings" for children growing and sharing as God's stewards.)

2 Kings 5:1-14

Many times we explore adult examples of stewardship of vocation--living and serving as God's servants in the contexts of our lives. Today's lesson introduces us to a little girl who serves God in her humble role. The servant girl in Naaman's household was not there voluntarily. In fact we could call her a slave.

The little girl had not left her faith and hope in the God of Israel in her homeland. She suggested to her leprosy infected master, "Would that my lord were with the prophet in Samaria! He would cure him of his leprosy." (vs. 3) Ultimately Naaman met Prophet Elisha and experienced God's healing in the waters of the Jordan River.

We are blessed to be washed in the healing waters of Holy Baptism. God has cleansed us from the leprosy of sin. We have the privilege of living and sharing that baptismal grace. We share the message of God's healing in the contexts of our lives. In the vocation of worker, parent, neighbor, or friend, adults are witnesses to those who need relief from the burden of sin. Children too in their vocation as student, friend, child, grandchild, are privileged to share God's workings in their lives.

Lutheran Church Extension Fund celebrates the gift of children in the family and church. In addition to their verbal witness, children participate in sharing the Gospel as investors in Lutheran Church Extension Fund ministry which provides funds and services to bring Good News through churches and schools around the world. The LCEF Young Investors Club is a convenient means of being an investment partner.

Prayer: Dear Jesus, thank you for the example of a little servant girl. Thank you for bringing us to the healing waters of Holy Baptism. Give us the courage to be your witnesses in all the places where you bring us and to the people you bring into our lives. Amen.

Small Stewards Bring Big Blessings Home—Notes to Family

Today's lesson notes the example of a little girl. In her vocation as a servant girl, God used her to cure an army general from the disease of leprosy. No matter what our age, God gives us the opportunity to tell others about His power and grace. What opportunities is God giving you as a student, friend, or neighbor to tell others about Him?

Parents, your child is important to you and to God's church. Children can also be important investors in Lutheran Church Extension Fund as they participate in Young Investors' Club. Your congregation provides convenient opportunities to make investments. See your congregation's Y.I. Club coordinator or visit www.lcef.org for more information.

Carole White, District Vice-President (carole.white@lcef.org)

Rev. Bob Riggert, Director of Customer Services (bob.riggert@lcef.org)

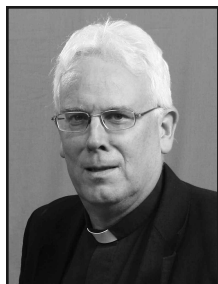
Ruth Gerken, Promotions Director (ruth.gerken@lcef.org)

Lutheran
Church
Extension
Fund



LCEF is a nonprofit religious organization; therefore, LCEF investments are not FDIC-insured bank deposit accounts. This is not an offer to sell investments, nor a solicitation to buy. The offer is made solely by LCEF's Offering Circular. Investors should carefully read the Offering Circular, which more fully describes associated risks.

Camp Okoboji in Milford, Iowa May 18–20, 2015



Dr. John Nordling

Dr. Nordling joined the CTS–FW faculty in 2006. He is a graduate of Concordia University, Portland (A.A., 1977), Valparaiso University (B.A., 1980) and Concordia Seminary, St. Louis (M.Div., 1985). Dr. Nordling has completed two academic degrees in Classics—the first, at Washington University in St. Louis (M.A., 1985), and the second, at the University of Wisconsin–Madison (Ph.D. dissertation: “Indirect Discourse and Rhetorical Strategies in Caesar’s *Bellum Gallicum* and *Bellum Civile*,” 1991).

From 1990–1994 he served as pastor of Grace English Ev. Lutheran Church and School in Chicago, Illinois. Dr. Nordling taught in the Department of Foreign Languages and Literatures at Valparaiso University (1994–1999) and in the Department of Classics at Baylor University, Waco, Texas (1999–2006).

Dr. Nordling has developed “Lutheranism & the Classics,” a biennial conference wherein pastors, classicists and educators consider how the classical languages have influenced Lutheranism in the past, and how Greek and Latin are poised to enrich church, academy and culture in the future.

He has written *Philemon* for the Concordia Commentary Series (CPH 2004) and *Religion and Resistance in Early Judaism: Greek Readings in I Maccabees and Josephus* (CPH 2010) for the Concordia Peer Reviewed Series.

The Gospel in Philippians

(1.5 CEU)

Written to thank Christians at Philippi for their generous gift to him, Paul gives hearty utterance in the letter to the Gospel of Christ Jesus: his thanksgiving to God for the Philippians’ partnership in his ministry (1:5), his being torn between going on and living in the body or departing to be with Christ (1:21–24), his joy amid the imprisonment (throughout), the Christ hymn (2:5–11) and the nature of their gift itself and its implications for their life together (4:14–19). The present course covers all these themes, and then some, and relates them to practical considerations in the parish and ministry.



CONCORDIA
THEOLOGICAL
SEMINARY
Fort Wayne, Indiana

6600 North Clinton Street
Fort Wayne, IN 46825

For more information about opportunities for Continuing Education and/or registration, you may contact Kara Mertz.
Phone: 260-452-2103
Email: CE@ctsfw.edu
Web: www.ctsfw.edu

Readings: See other side.

Location:

Camp Okoboji
1531 Edgewood Dr.
Milford, IA 51351

Coordinators:

Lori Gamble – Camp Okoboji
Lorigamble02@gmail.com
1531 Edgewood Dr.
Milford, IA 51351
Phone: 712-337-3325

Housing:

Lodging and meals for Camp Okoboji need to be reserved by calling 712-337-3325. (The cost for meals and lodging is \$190.)

Forming servants in Jesus Christ who teach the faithful, reach the lost, and care for all.

Camp Okoboji in Milford, Iowa May 18–20, 2015

Dr. John G. Nordling: The Gospel in Philippians

Please return this completed form with your check or credit card information to Concordia Theological Seminary, Continuing Education, 6600 N. Clinton Street, Fort Wayne, IN 46825. Please contact Kara Mertz at (260) 452-2103 or CE@ctsfw.edu with your questions or concerns. You may fax your registration to (260) 452-2121.

(Please circle if applicable.) Dr. Rev. Dcs. Mr. Ms. Mrs.

Name _____

Date of Birth ____/____/____

Street _____

City _____ State _____ Zip _____

Day Phone _____

Email _____

Category

Price

Qty.

Amount

Payment Type:

1.5 CEU course for Pastors/Prof. Church Workers \$150 x _____ = _____

1.5 CEU course for Retired Pastors/Lay Persons \$100 x _____ = _____

Fort Wayne Students/Fort Wayne Vicars \$0 x _____ = _____

1.5 CEU course for Fort Wayne Vicar/Fieldwork Supervisor \$0 x _____ = _____

Name(s) of Vicar/Fieldworker(s): _____

☐ My check is enclosed. Make check payable to CTS.

☐ Please bill my credit card. Choose one: ☐ MasterCard ☐ Visa

Card # _____ Exp. ____/____

3-digit security code from the back of credit card. ____ | ____ | ____

Signature: _____

Required Readings:

Acts 16 (all-English)

Bo Reicke, *Re-examining Paul's Letters. The History of the Pauline Correspondence* (Trinity Press International, 2001) 91-102, 131-140.

Thompson, Michael B., "The Holy Internet: Communication between Churches in the First Christian Generation." Pages 49-70 in *The Gospels for All Christians: Rethinking the Gospel Audiences*. Edited by Richard Bauckham. (Grand Rapids: Eerdmans, 1998).

J. G. Nordling, "A More Positive View of Slavery: Establishing Servile Identity in the Christian Assemblies." *Bulletin for Biblical Research* 19.1 (2009) 63-84. Available here: <http://www.ctsfw.edu/Document.Doc?id=214>.

Suggested Readings:

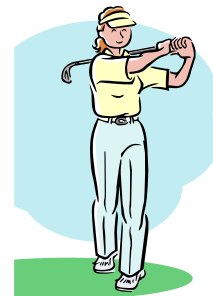
Either Donald Guthrie, *New Testament Introduction*, 3d ed., 522-544 or M.H. Franzmann, *The Word of the Lord Grows*, 119-148 or F.F. Bruce, *Paul: Apostle of the Heart Set Free* (Paternoster Press, Ltd., 1977) 212-224.

J. G. Nordling, "The Gospel in Philemon." *Concordia Theological Quarterly* 71.1 (2007) 71-83. Available here: <http://www.ctsfw.net/media/pdfs/nordlinggospelinphilemon.pdf>.

Finally, if you're up to the challenge, please translate the text selections in Philippians from the original Greek (about 55 verses).



IDE GOLF OUTING FAWN CREEK COUNTRY CLUB ANAMOSA, IA



WHO: All Professional Church Workers, Pastors, Staff, and Spouses

WHAT: Annual Two-Person Best Shot Golf Tournament
9 Holes – Bring Your Own Partner, or We Will Pair You Up

WHEN: Monday, June 29, 2015
Arrive by 8:30 a.m.; Tee-Off @ 9:00 a.m.

WHERE: Fawn Creek Country Club
1601 130th Street (right along US Hwy 151)
Anamosa, IA 52205

HOW MUCH: \$15.00 Green Fees & Cart Rental (*payable to Fawn Creek at golf outing*)



*Sponsored by Thrivent Financial for Lutherans. Lunch and Prizes provided courtesy of Thrivent.
In case of inclement weather, call Fawn Creek @ 319-462-4115 or Rev. Rothchild @ 319-350-9564.*

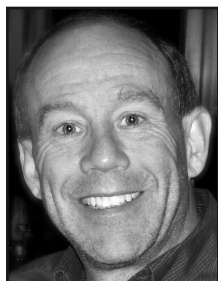
Look for registration information on our website by February 1, 2015!



Cedar Falls, Iowa

July 13–15, 2015

Begins 1:00 p.m. on Monday and ends 11:30 a.m. on Wednesday



Dr. R. Reed Lessing

Dr. Lessing serves as senior pastor at St. Michael Lutheran Church in Fort Wayne, Indiana. Prior to that he was on the faculty at Concordia Seminary, St. Louis, Missouri, for 14 years. His books include *Interpreting Discontinuity: Isaiah's Tyre Oracle* (Eisenbrauns, 2004), *Jonah* (Concordia Publishing House [CPH], 2007), *Amos* (CPH, 2009), *Isaiah: Chapters 40-55* (CPH, 2011), *Prepare the Way of the Lord: An Introduction to the Old Testament* (co-authored with Andrew Steinmann, CPH, 2013) and *Isaiah: Chapters 56-66* (CPH, 2014).

SPECIAL NOTE: Summer 2016 Isaiah 40-66 will be taught by Dr. Lessing

Isaiah 1–39

(1.5 CEU)

Located on the front of the historic Trinity Church in Boston are the sculptures of six men. At the center are the four Gospel writers who are flanked on the right by St. Paul and on the left by Isaiah. Isaiah's presence in this distinguished "cloud of witnesses" speaks volumes about his importance. This class will look at the prophet's first 39 chapters with a special eye towards preaching and teaching from these texts.

Suggested Readings:

The chapter on Isaiah in, *Prepare the Way of the Lord: An Introduction to the Old Testament* (Reed Lessing and Andrew Steinmann, Concordia Publishing House, 2013).

The introduction to Isaiah in, *The Prophecy of Isaiah: An Introduction and Commentary* (Alec Motyer, Intervarsity Press, 1993).



CONCORDIA
THEOLOGICAL
SEMINARY
Fort Wayne, Indiana

For more information about opportunities for Continuing Education and/or registration, you may contact Kara Mertz.
Phone: 260-452-2103
Email: CE@ctsfw.edu
Web: www.ctsfw.edu

Forming servants in Jesus Christ who teach the faithful, reach the lost, and care for all.

Cedar Falls, Iowa

July 13–15, 2015

Begins 1:00 p.m. on Monday and ends 11:30 a.m. on Wednesday

Dr. R. Reed Lessing: Isaiah 1–39

Please return this completed form with your check or credit card information to Concordia Theological Seminary, Continuing Education, 6600 N. Clinton Street, Fort Wayne, IN 46825. Please contact Kara Mertz at (260) 452-2103 or CE@ctsfw.edu with your questions or concerns. You may fax your registration to (260) 452-2121.

(Please circle if applicable.) Dr. Rev. Dcs. Mr. Ms. Mrs.

Name _____

Date of Birth ____/____/____

Street _____

City _____ State _____ Zip _____

Day Phone _____

Email _____

Category

Price Qty. Amount

1.5 CEU course for Pastors/Prof. Church Workers \$150 x _____ = _____

1.5 CEU course for Retired Pastors/Lay Persons \$100 x _____ = _____

Fort Wayne Students/Fort Wayne Vicars \$0 x _____ = _____

1.5 CEU course for Fort Wayne Vicar/Fieldwork Supervisor \$0 x _____ = _____

Name(s) of Vicar/Fieldworker(s): _____

Payment Type:

☐ My check is enclosed. Make check payable to CTSFW.

☐ Please bill my credit card. Choose one: ☐ MasterCard ☐ Visa

Card # _____ Exp. ____/____

3-digit security code from the back of credit card. ____ | ____ | ____

Signature: _____